

**Geisinger Health Plan**

# Caring

## Geisinger Overview

Geisinger Health Plan may refer collectively to Geisinger Health Plan, Geisinger Quality Options, Inc., and Geisinger Indemnity Insurance Company, unless otherwise noted.

---

---

---

---

---

---

---

---

## Geisinger Health

<p>7 acute care hospitals Multiple campuses</p> <p>Hospitals</p>	<p>2,220 licensed hospital beds 344 skilled nursing facility beds 91 chemical dependency beds</p> <p>Provider Facilities</p>	<p>399 medical students 105 graduate students</p> <p>Geisinger Commonwealth School of Medicine</p>
<p>557,463 members</p> <p>Provider Sponsored Health Plan</p>	<p>1,697 employed physicians Practicing at 216 clinic sites</p> <p>Physician Practice Group</p>	<p>26,656 Full-Time Equivalents</p> <p>Employees</p>

**Geisinger Health Plan**

---

---

---

---

---

---

---

---

## Geisinger Health Plan

- Established in 1985
- Core market is Pennsylvania
- Serving 586,000 members
- Products include Medicare, Medicaid and commercial lines

**Geisinger Health Plan**

3

---

---

---

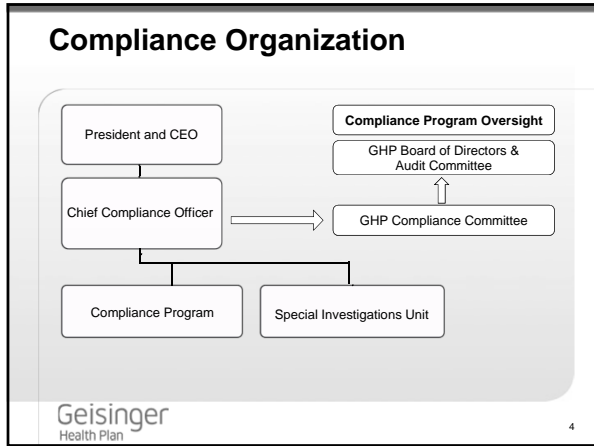
---

---

---

---

---



---

---

---

---

---

---

---

---