



Executive Briefing Kansas HIE Requirements and Considerations

Kansas Health Information Network,
Inc.




KANSAS HEALTH
INFORMATION NETWORK



iCA Integrating care. Improving health.


What does a Health Information Exchange do????



1. Data Transport-Interoperability

- a) Transitions of Care
- b) Patient Engagement
- c) Public and Population Health

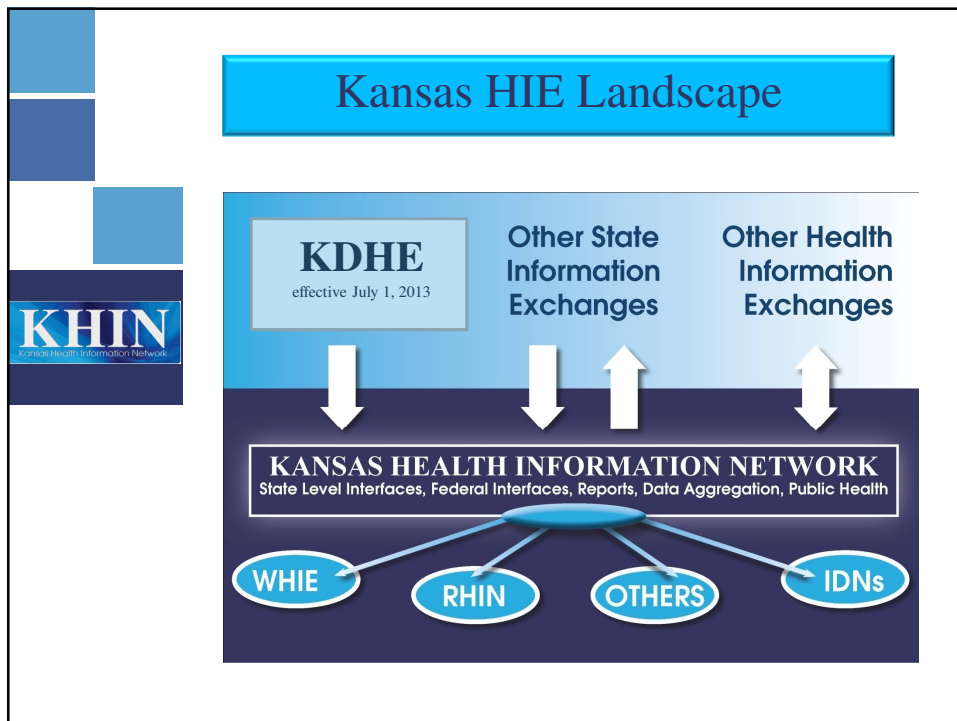
2. Data Normalization, Aggregation
and Reporting



Kansas Key HIE Achievements



1. 2011 Passage of KHITE
Legislation normalizing all patient consent requirements with HIPAA.
2. 2012 Legislature reconfirmed KHITE
3. KDHE technology functionality requirement for security override
4. 2013 KHIN Policy and Procedure







42 CFR Part 2 Patient Consent considerations for data sharing

Two Options

1. Block Data at the EHR level.
Concerns:
 - Data is NOT available in an emergency
 - Data is NOT available when a patient gives consent
2. Block Data at the HIE level.
Concerns:
 - On going communication between provider and HIE
 - Notification of security override without patient consent

Support EPs/EHs/CAH in Meeting MU2 Data Transport

Public Health Transmissions

1. Immunizations
2. Electronic Lab Reporting
3. Syndromic Surveillance
4. Cancer
5. Infectious Diseases

Patient Engagement

1. Summary of Care
2. Secure Messaging
3. Patient Education

Transitions of Care

1. Summary of Care
2. Provider Directory
3. eHealth Exchange



KHIN Key Statistics

1. Over 2 Million + Unique Patients in KHIN Exchange
2. 830+ KHIN Members
3. 280 +Health Care Organizations in Production
4. Public Health Transmissions
 - Syndromic Surveillance—1,500,000 +transmissions
 - Immunizations—60,000+









KHIN HIE Products 2013-2014

1. Secure Clinical Messaging/DIRECT
2. Provider Portal
 - Full HIE-Query functionality
 - Web based access
3. Personal Health Record
4. State level interfaces
 - Immunizations
 - Syndromic Surveillance
 - Reportable Diseases
 - Cancer Registry
 - Infectious Disease Registry
5. Alerts and Data Extracts



Contact Information

Laura McCrary Ed.D

Executive Director

Office: 785-861-7490

lmccrary@khinonline.org